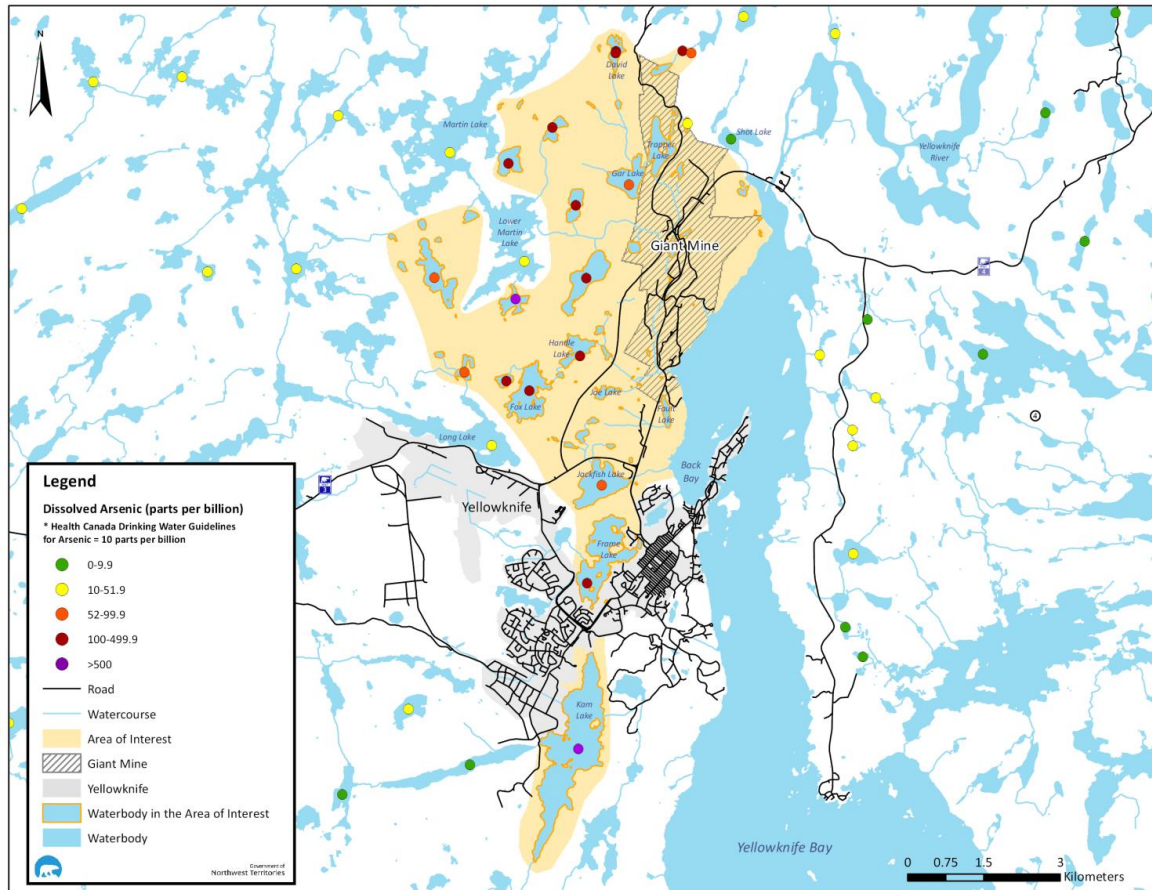


## Map of Arsenic Concentrations Measured in Water Bodies in the Yellowknife Area with Corresponding Public Health Advice

UPDATED: April 10, 2017



Data Source:

Mike J Palmer, Galloway JM, Jamieson HE, Patterson RT, Falck H, and Kokelj SV. The concentration of arsenic in lake waters of the Yellowknife area; Northwest Territories Geological Survey, NWT Open File 2015-06. 25 p.

Adam J. Houben, Rebecca D'Onofrio, Steven V. Kokelj, and Jules M. Blais. Factors affecting elevated arsenic and methyl mercury concentrations in small shield lakes surrounding gold mines near the Yellowknife, NT, (Canada) region. PLOS One. 2016. <http://dx.doi.org/10.1371/journal.pone.0150960>.

Jackson, F. (1996). A metal and trace element evaluation in Kam and Grace Lakes. Yellowknife, NT: Indian and Northern Affairs Canada.

### Lakes with green points:

Arsenic levels are below Health Canada's drinking water guidelines. It is recommended not to drink untreated water from any lake. However, these lakes are considered safe for swimming and fishing.

### Lakes with yellow points:

Arsenic levels are above Health Canada's drinking water guidelines; however, occasional exposure does not pose a significant risk for arsenic-related health effects. It is recommended not to drink untreated water from any lake. These lakes are considered safe for swimming and fishing.

### Lakes with orange, red or purple points:

Arsenic levels are elevated (52 parts per billion and above). Water should not be consumed from these lakes. It is also recommended to avoid fishing, swimming, and harvesting berries, mushrooms and other edible plants within the immediate vicinity of these lakes. However, walking through this area does not pose a health hazard.