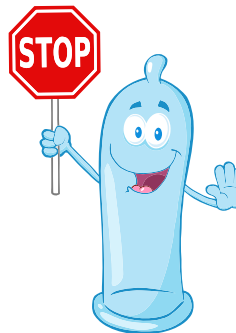




Chlamydia Rates IN THE NORTHWEST TERRITORIES

What is chlamydia?

Chlamydia is a bacterial infection that is spread via anal, vaginal or oral sex with infected partners.

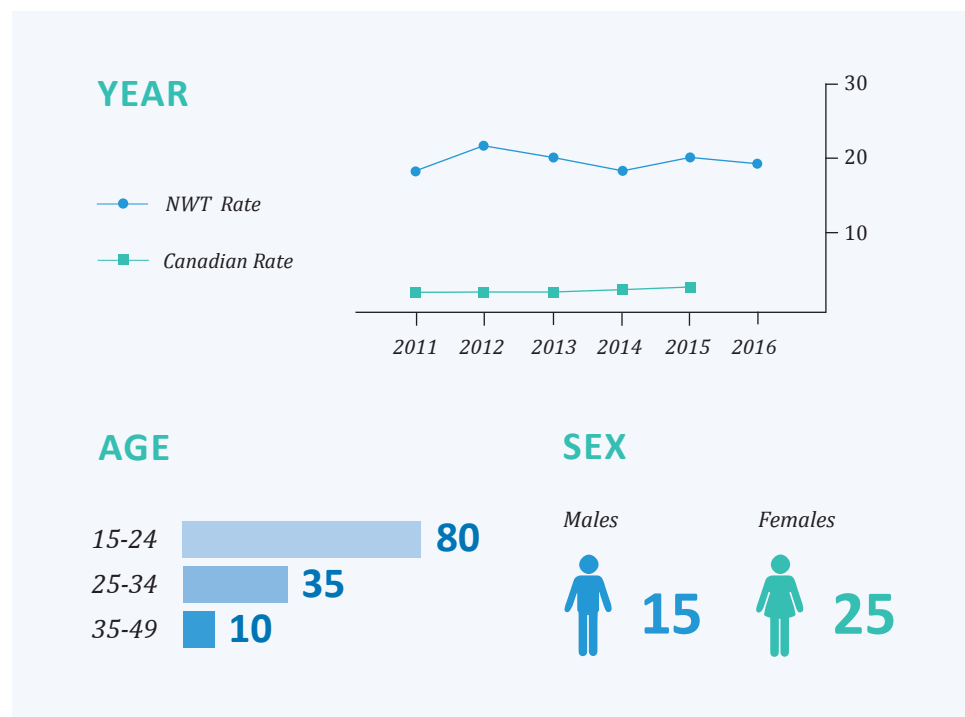


19

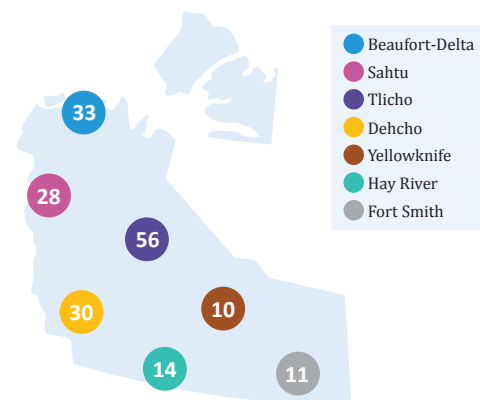
 PER 1,000 PEOPLE

had chlamydia in the NWT in 2016.

INFECTION RATES PER 1,000 PEOPLE BY



ACROSS THE NWT



NWT

19

CANADA*

3.3

Compare chlamydia rates per 1,000 people

THE NWT HAS OVER 6X THE NATIONAL RATE

SO WHAT?

Untreated chlamydia can lead to pelvic and urinary tract diseases, pregnancy complications, and not being able to have children.

PROTECT YOURSELF

You can have chlamydia and not know it. You can still pass it on to others. If you are sexually active, protect yourself by using a condom every time you have sex.

GET TESTED

Find out if you have chlamydia by taking a urine test. Contact your local health center or public health unit and make an appointment today.

INDICATOR SOURCE: NWT data – NWT Notifiable Disease Registry, Population Health, Department of Health and Social Services; Canadian data – Public Health Agency of Canada, Canadian Notifiable Disease Surveillance System. *Note: Canadian data is only available until 2015. INDICATOR DEFINITION: The chlamydia rate is the number of people for every 1,000 persons who have had chlamydia in 2016.