

# Early Childhood Intervention Pilots



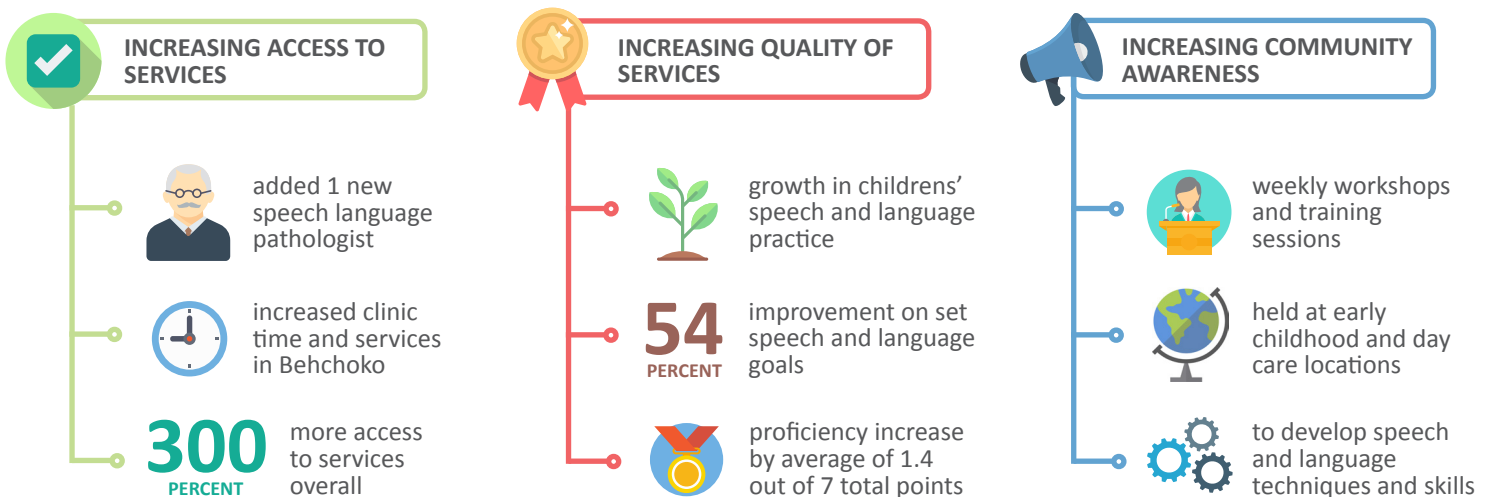
## Inuvialuit Regional Corporation Early Childhood Program

This pilot aims to improve access to rehabilitation services in remote communities by providing more access to visiting professional rehabilitation specialists, and by training early childhood educators in community-based intervention skills. For more information on this program, please contact (867) 777-7000.



## Tlicho Community Services Agency Speech Language Pathologist Plan

This pilot aims to improve access and relevancy of professional speech and language services to Tłjchq children by developing a regionally-based speech and language program. For more information on this plan, please contact (867) 392-6381.



## Dehcho Region Early Childhood Development Intervention Plan

This pilot aims to improve access and uptake in early childhood development programs through coordination and care planning in the Dehcho region. For more information on this plan, please contact (867) 767-9090 ext. 40000.

