



# Cannabis Use

## IN THE NORTHWEST TERRITORIES

### What is cannabis?

Cannabis, also known as weed, pot, or marijuana, is a plant that can be used to achieve a high by eating or smoking part of the plant.

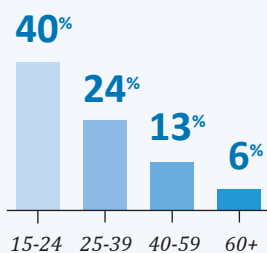


IN 2012,  
**21%**

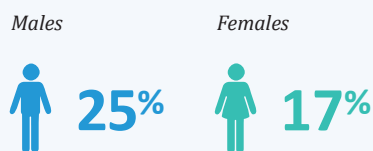
of people in the NWT age 15 and over had tried cannabis at least once in the last year.

## CANNABIS USE BY

### AGE



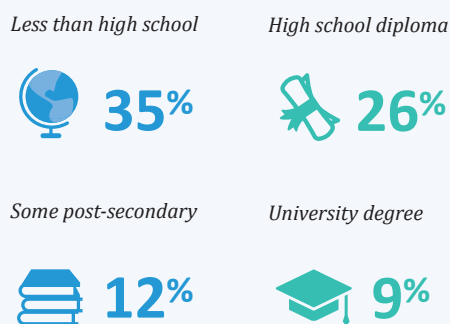
### SEX



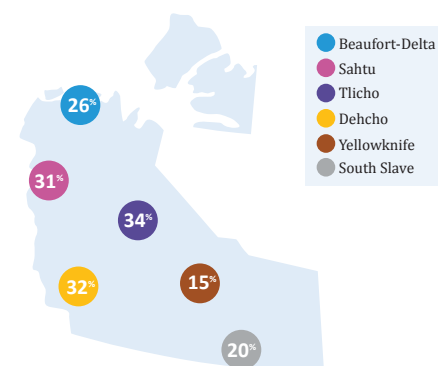
### ETHNICITY



### EDUCATION



## ACROSS THE NWT



### NWT RATE

**21%**

### NATIONAL RATE

**12%**

vs.

There are many options available in the NWT to help treat an addiction.

Call the NWT Help Line at 1-800-661-0844 or contact your local Community Counselling Program or health care professional.

More information, including contact details, is available at [www.hss.gov.nt.ca/en/services/addictions](http://www.hss.gov.nt.ca/en/services/addictions).