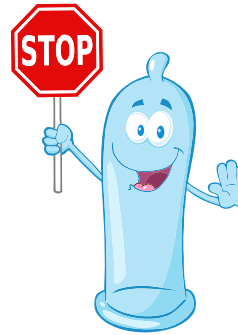




Gonorrhea Rates

IN THE NORTHWEST TERRITORIES



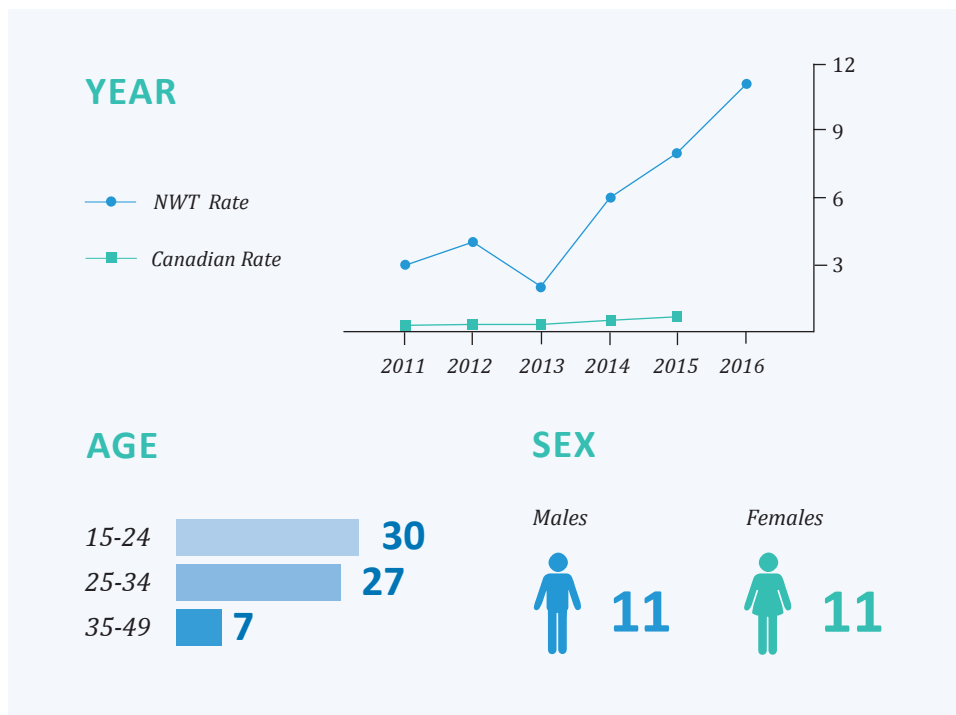
11 PER 1,000 PEOPLE

had gonorrhea in the NWT in 2016.

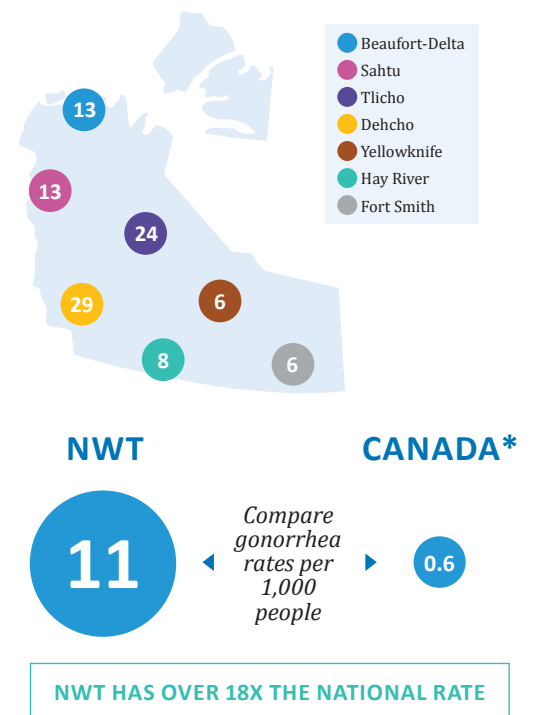
What is gonorrhea?

Gonorrhea is a bacterial infection that is spread via anal, vaginal or oral sex with infected partners.

INFECTION RATES PER 1,000 PEOPLE BY



ACROSS THE NWT



SO WHAT?

Untreated gonorrhea can lead to pelvic disease, pregnancy complications and not being able to have children.

PROTECT YOURSELF

You can have gonorrhea and not know it. You can still pass it on to others. If you are sexually active, protect yourself by using a condom every time you have sex.

GET TESTED

Find out if you have gonorrhea by taking a urine test. Contact your local health center or public health unit and make an appointment today.

INDICATOR SOURCE: NWT data – NWT Notifiable Disease Registry, Population Health, Department of Health and Social Services; Canadian data – Public Health Agency of Canada, Canadian Notifiable Disease Surveillance System. *Note: Canadian data is only available until 2015. INDICATOR DEFINITION: The gonorrhea rate is the number of people for every 1,000 persons who have had gonorrhea in 2016.