

MEDICAL ASSISTANCE IN DYING PROCESS MAP

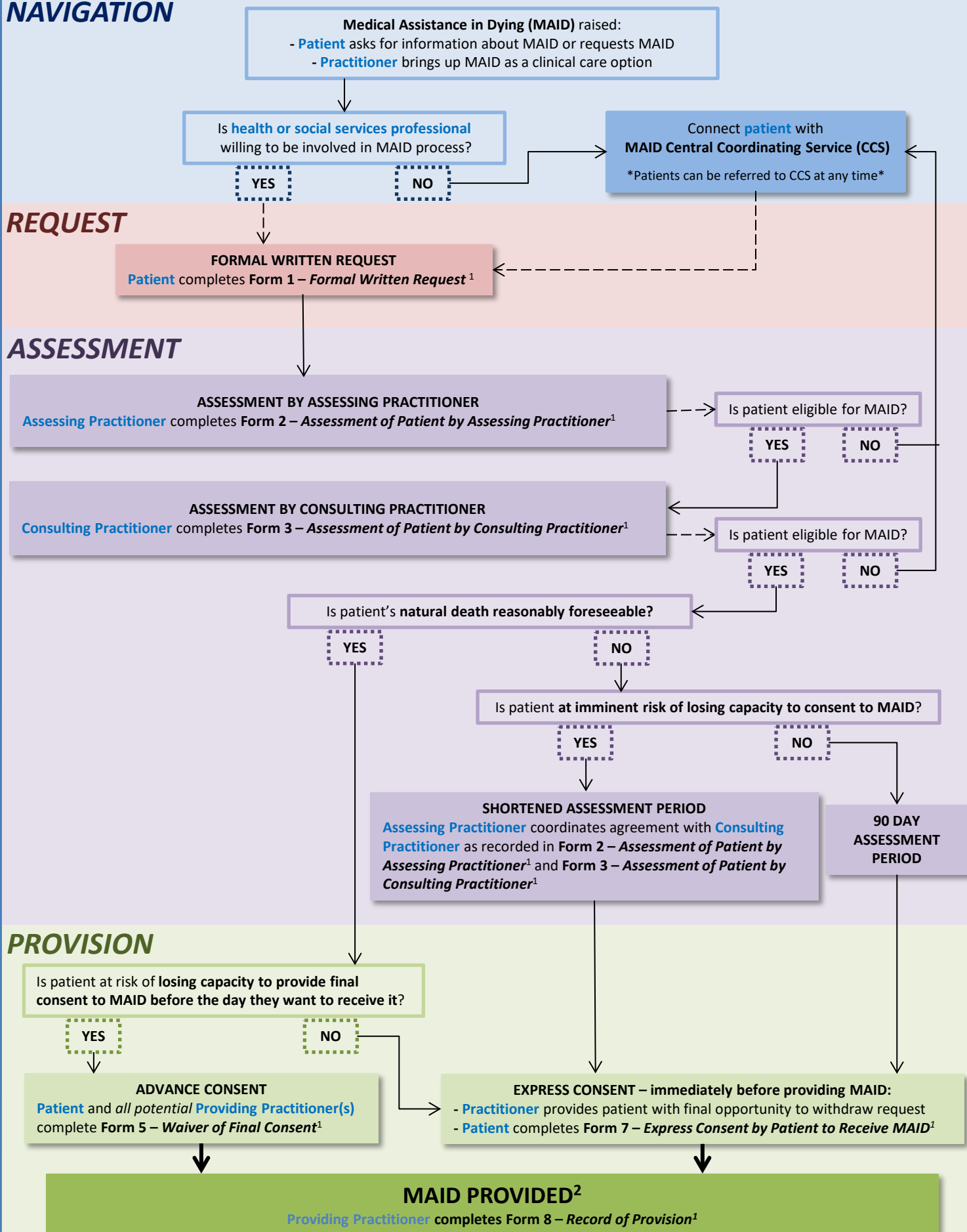
This process map is for illustrative purposes only and must be used in conjunction with the 'Medical Assistance in Dying Guidelines for the Northwest Territories.'

NAVIGATION

REQUEST

ASSESSMENT

PROVISION



1. Completed forms are to be included in patient's medical record and a **copy securely emailed or faxed to the MAID Review Committee** in accordance with the timelines set out in the Forms and Interim Guidelines.

2. MAID may be provided by having the Providing Practitioner administer medications to the patient or by having the Providing Practitioner prescribe or provide medications for the patient to take themselves in the presence of the Providing Practitioner ('self-administration').