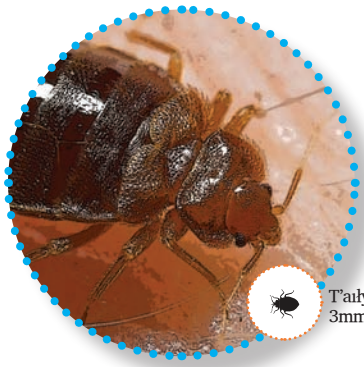
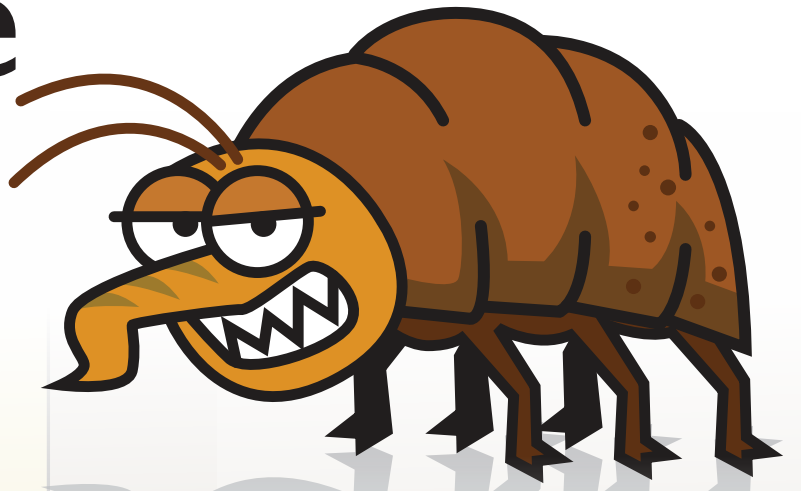
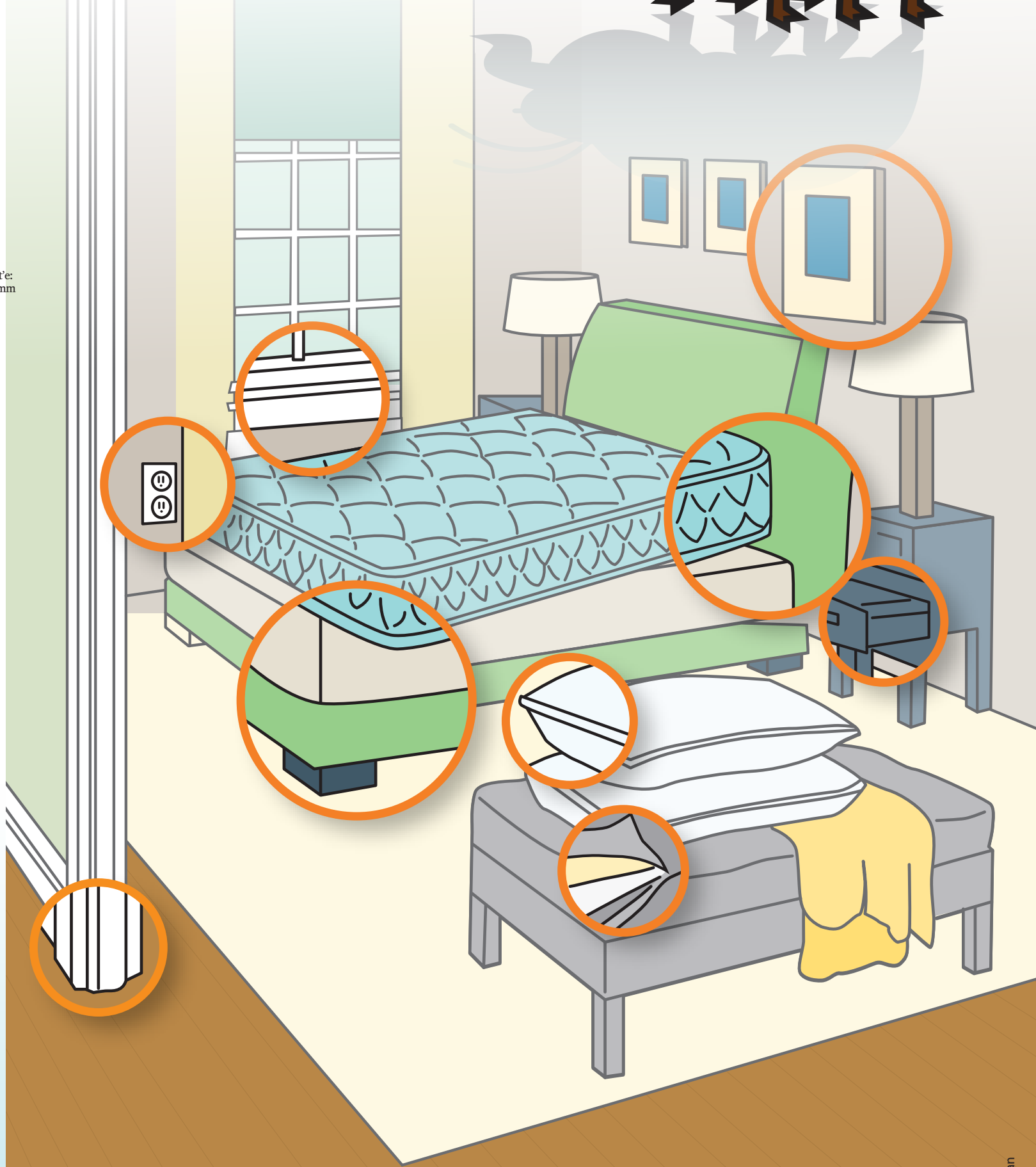


# Jadízı nĕn k'e dahte ts'ı guaze

Dĕne kŷe – u, beyĕ nats'etis kŷe-u nezŷ yıs sureldhĕn dĕ hŷlı dahte ts'ı guaze hŷlı xadŷwıle. Hŷlza xa hŷrenile-u, dĕnechıl-u, tth'ı tadh ŷh shĕlyı xa ghĕrĕs ŷat'e. Nekŷe yıs dahte ts'ı guaze dŷlı lı xa nĕnıta-u, hat'ı hŷlı ŷunt'e dĕ, dŷdı ŷane xa yıs senile –u, nĕdı t'ĕ neba thalde xa dĕ, hĕnele.



Taiya ŷat'e:  
3mm x 5mm



ŷaŷ begħa k'ŷrlıya rıŷı dĕ, Environmental Health Services hŷlye, bets'ĕn yanĕktı  
Begħŷldesche (867) 669 - 8979 | Yudĕgh Inuvık (867) 777-7250 tŷ 777-7220 | Hĕt'ŷoresche (867) 874-7261  
Sats'ĕn benı hŷlı lĕt'e yĕ : [environmental\\_health@gov.nt.ca](mailto:environmental_health@gov.nt.ca)