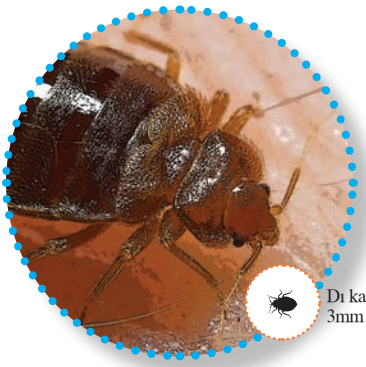
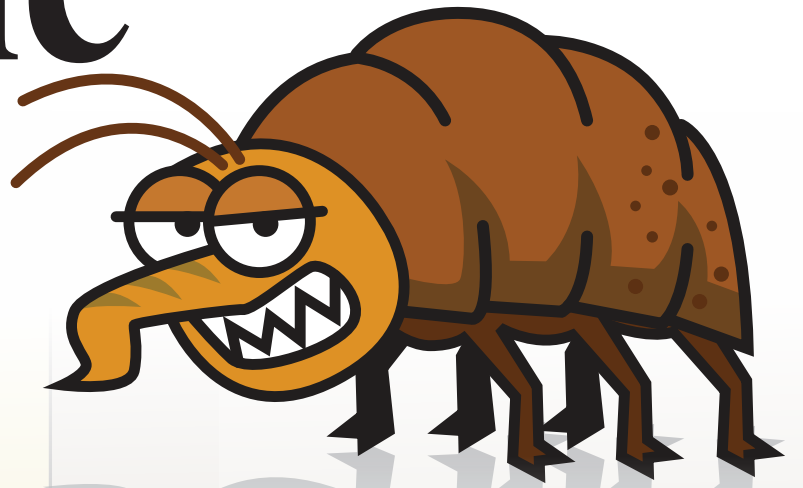
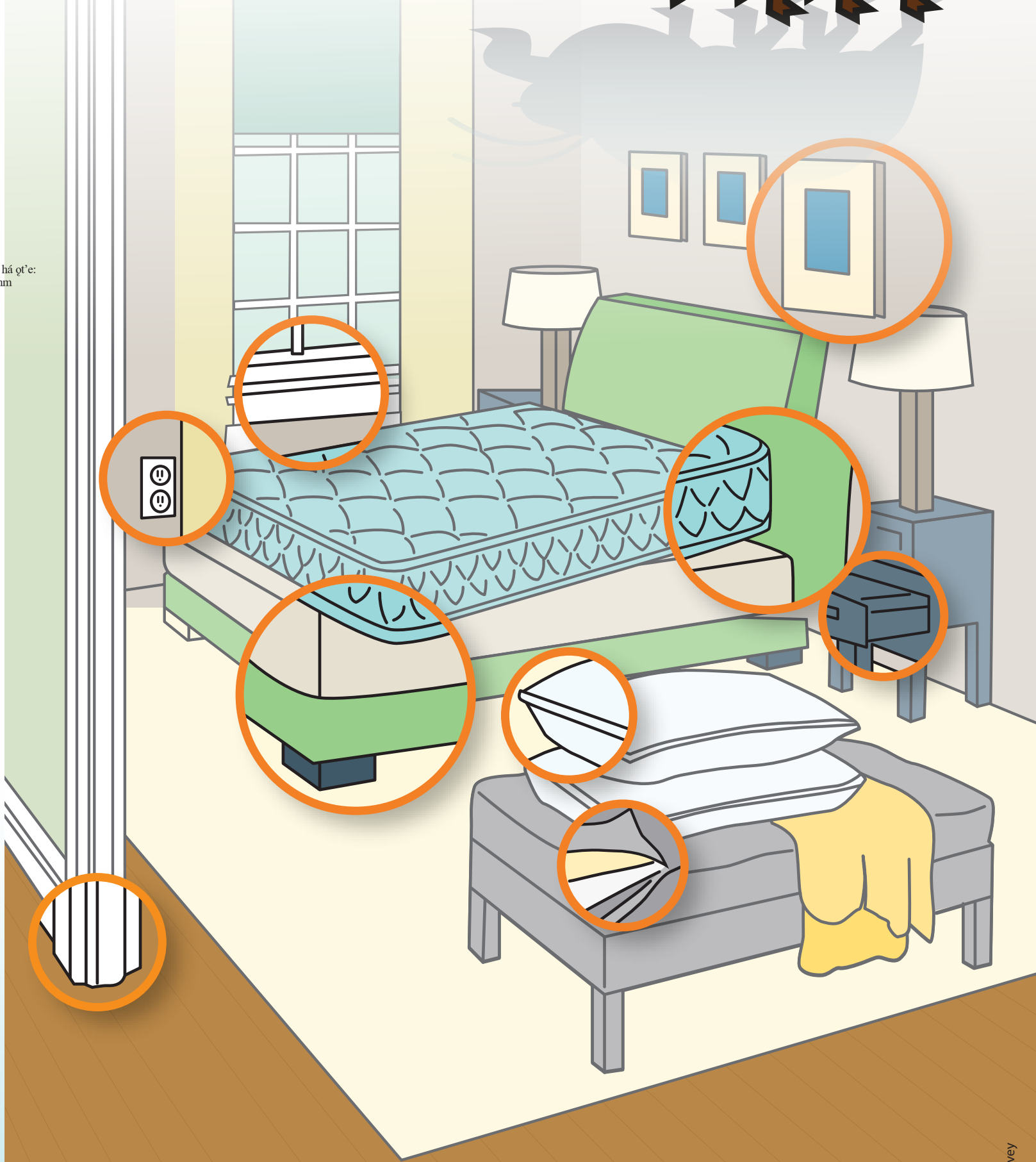


NWT zhíe ?éhteé Gue

T'azoh koqé gots'eh, Nats'enete k'eh gok'enátse kó, k'ála réhteé gue gúli. Mots'ihzá gha dezhi, aegiatséle gots'eh, tedhe shézhe gha zoh kozáh. Nekóqé nızheq kaondú kánıta, megónezo hénıde, di t'áh hıle aneleh.



Di kaecho há q'e:
3mm x 5mm



Ek'éndaa megho ek'éodejo gha Environmental Health Services góts'edi k'eh goanda.
Yellowknife (867) 669-8979 | Inuvik (867) 777-7250 íle hénıde 777-7220 | Hay River (867) 874-7261
Met'áh gondi łatake gháts'enda: environmental_health@gov.nt.ca k'eh mekánahta