



# Hallucinogen Use IN THE NORTHWEST TERRITORIES

## What is a hallucinogen?

A hallucinogen is a drug, such as PCP, magic mushrooms, or LSD, that can cause hallucinations or other changes in perceptions, thoughts, or emotions.

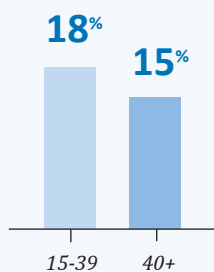


IN 2012,  
**17%**

of people in the NWT age 15 and over reported using hallucinogens at least once within their lifetime.

## LIFETIME HALLUCINOGEN USE BY

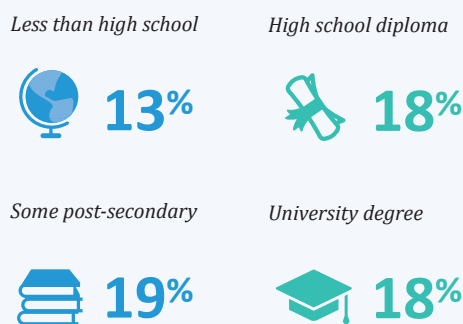
### AGE



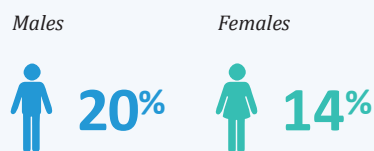
### ETHNICITY



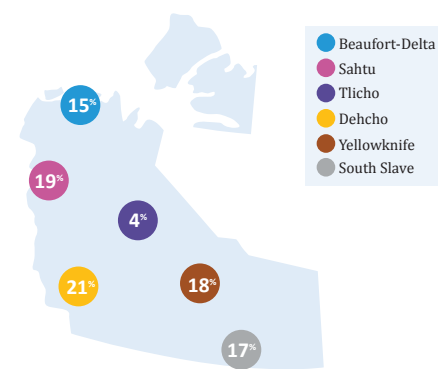
### EDUCATION



### SEX



## ACROSS THE NWT



### NWT RATE

**17%**

### NATIONAL RATE

**13%**

vs.

There are many options available in the NWT to help treat an addiction.

Call the NWT Help Line at 1-800-661-0844 or contact your local Community Counselling Program or health care professional.

More information, including contact details, is available at [www.hss.gov.nt.ca/en/services/addictions](http://www.hss.gov.nt.ca/en/services/addictions).

INDICATOR SOURCE: NWT Data: 2012 NWT Report on Substance Use and Addiction, Department of Health and Social Services; Canadian Data: 2012 Canadian Alcohol and Drug Use Monitoring Survey, Health Canada. INDICATOR DEFINITION: Lifetime use of hallucinogens is the proportion of individuals over the age of 15 who had reported trying PCP, Psilocybin mushrooms, or LSD/acid within their lifetime.