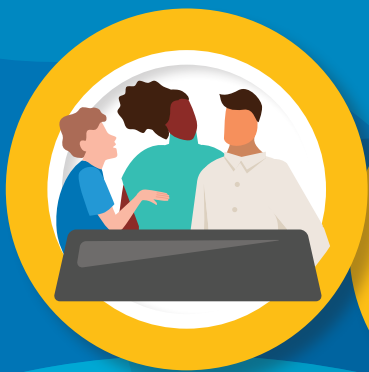




NWT Facility Based Addictions Treatment Program



GNWT HEALTH AND SOCIAL SERVICES

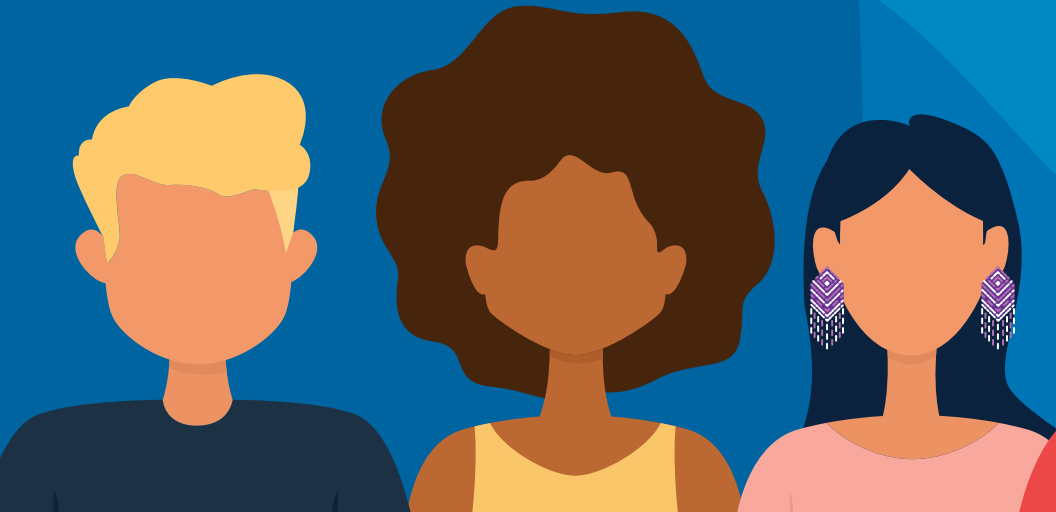


NWT residents (18 years of age and older) have access to a number of high-quality treatment facilities at no charge

Treatment facilities include:

- Poundmaker's Lodge
- Fresh Start Recovery
- Aventa Centre of Excellence for Women with Addictions
- Thorpe Recovery Centre
- Edgewood (Pre-Approval ONLY)
- Renascent (Pre Approval ONLY)

For information about the facilities please visit www.hss.gov.nt.ca/facilitybasedtreatmentoptions or scan the QR Code below.



How do I access an Addictions Recovery Treatment Facility?

If you or someone you know needs help, talk to your community counsellor, psychologist, nurse, physician, social worker, addictions counsellor or counsellor through your workplace employee assistance program. Who you choose to work with to initiate this process will be based on what is most comfortable for you. Whoever you choose to help you work through this process will become your case manager and help you determine which facility is the best fit for you, and help you complete the paperwork.

Please visit www.hss.gov.nt.ca/community-counsellor to find a counsellor in your region.

If you're in Yellowknife

- Tree of Peace Friendship Centre provides addictions support and can help you through the application process – 873-2864
- Community Counselling Program – 767-9110

What do I need?

- Valid NWT Health Care Card
- Valid ID for travel (government issued photo ID or 2 pieces of government issued non photo ID)

If you do not have these things it will be important to start the process to get them as soon as possible.



What if I need detox?

Some of the facilities have onsite detox and others have arrangements with local facilities. You can discuss this with your case manager to determine which facility will best meet your needs.

What can I expect at a Treatment Facility?

- Treatment programs range from 5 weeks to 3 months depending on the facility.
 - In most cases there are shared accommodations – i.e. two people to a room.
 - In most programs the bulk of the work is done in groups with some additional individual counselling.
-

What happens once I complete treatment?

Throughout the treatment process your case manager and treatment counsellor will help you to develop an aftercare plan. This plan can include things like where you might live and how you will be supported in your recovery journey when you return home from the treatment program/facility.

NWT residents now have access to the EHN Outpatient Services/ WAGON App a virtual aftercare program to support them in their recovery. Residents can register for the EHN Wagon program by contacting their local counsellor at the following link: www.hss.gov.nt.ca/community-counsellor or by visiting: <https://sessions.onthewagon.ca/booking/steps/matching/>