

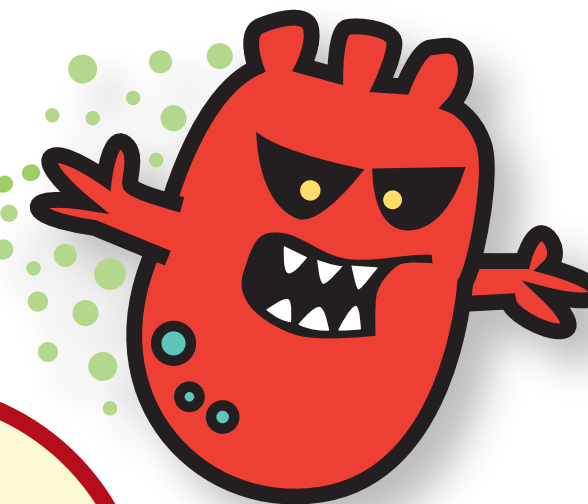
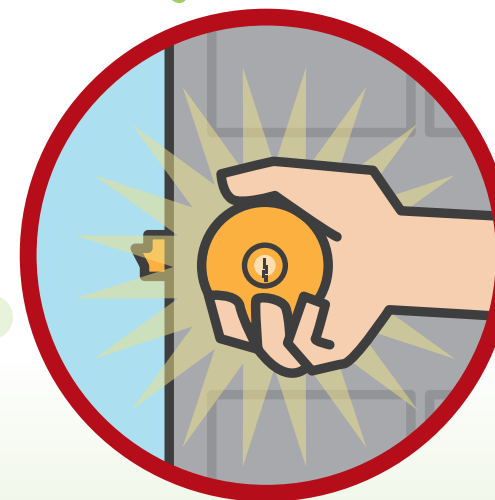
L > n r L c d n c

ለኃይለማርያም ሃይለማርያም ሚኒስቴር - ሚኒስቴር ስለሚሆን የሥራ ምክር ቤቱ ለሚኒስቴር ማረጋገጫ ይገባል፡፡
ሌሎች ሚኒስቴሮች ስራ ላይ ሲሆኑ ለሚኒስቴር ማረጋገጫ ይገባል፡፡

ክፍል ፩ ፡ ስራዎች
፩ ፡ ስራዎች
፪ ፡ ስራዎች
፫ ፡ ስራዎች



$\triangleright_a \triangleleft \rho_a \Gamma \triangleright C^{\flat}$
 $\Delta^{\natural} \Gamma L^{\flat} K \triangleright \prec^{\sharp}.$



Inuktitu